



# BATEMANS BAY COMMUNITY HEALTH

PROJECT UPDATE AND FAQs | JANUARY 2024



## Modern, integrated, and convenient: your new Batemans Bay Community Health

The NSW Government has committed \$20 million to build a new community healthcare facility to support the healthcare needs of the Batemans Bay community.

The Batemans Bay Community Health facility is being designed to meet the healthcare needs of the community and provide improved local access to services including:

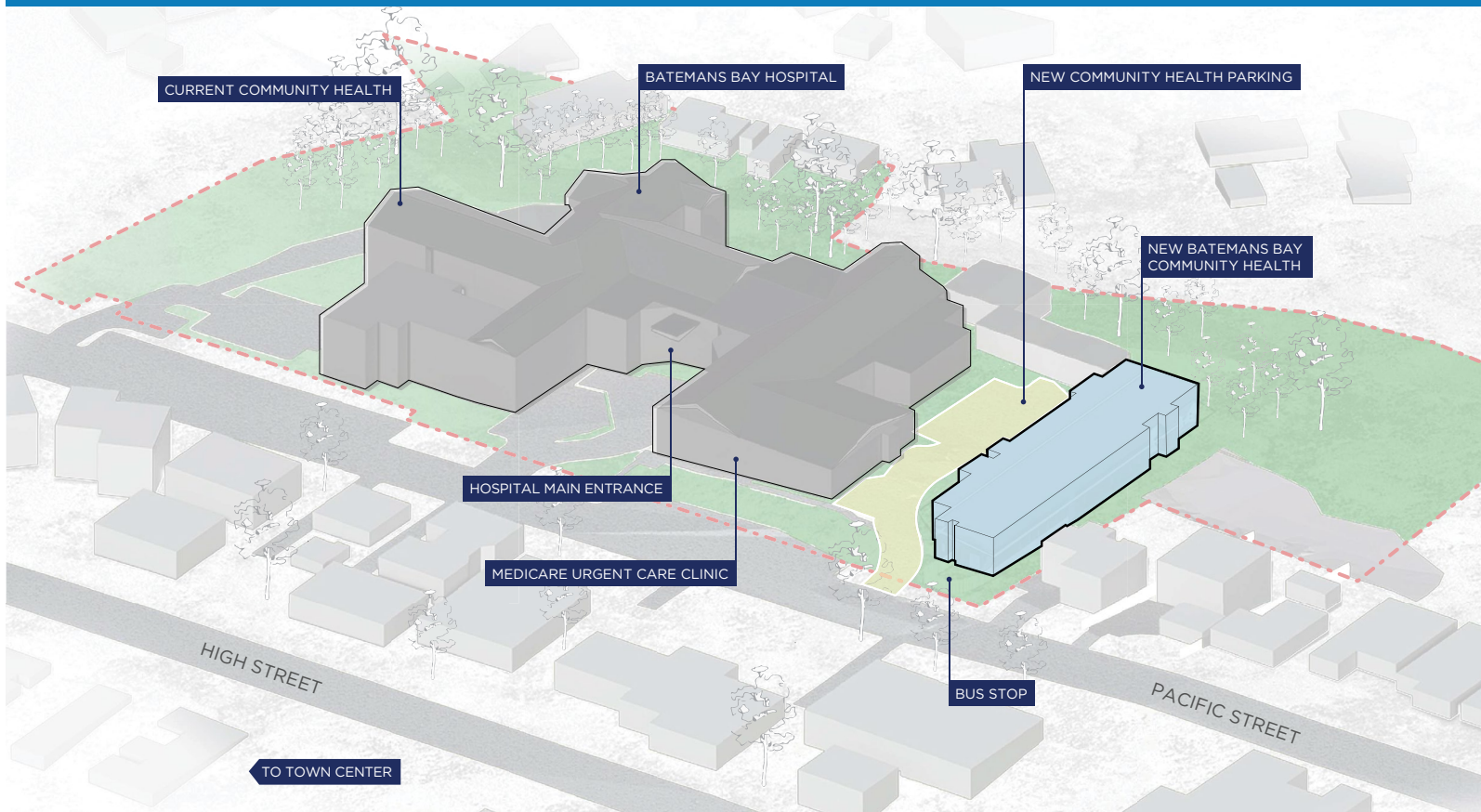
- Allied Health
- Child, Youth and Family Care
- Women's Health/Sexual Health
- Primary healthcare services such as community nursing, wound management, and palliative care
- Aboriginal Health
- Community Mental Health and Drug & Alcohol.

Batemans Bay Community Health will be a welcoming, modern, and purpose-built facility, supporting contemporary community healthcare delivery.

Health Infrastructure, Southern NSW Local Health District, and the Batemans Bay community are working together to plan the new facility and service to meet the health needs of the community.

Batemans Bay Community Health will be fully integrated with the new Eurobodalla Regional Hospital, to ensure the community always has access to the right healthcare, in the right setting.

Batemans Bay Hospital will continue to provide healthcare services for the community while we build the new service.



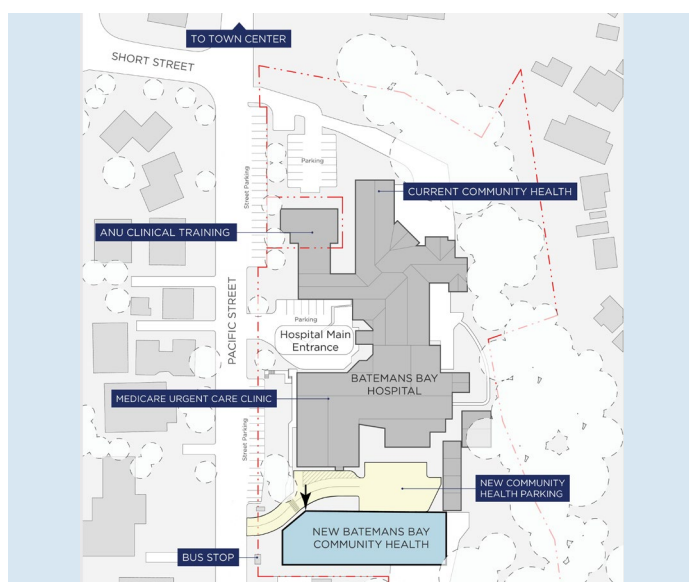
## Master Plan

### What is the master plan?

The master plan is a high-level map that identifies the location of the building on the site, the key elements of the health service, and proximity to key amenities.

The master plan is prepared and informed by the project's design team, in collaboration with clinicians, and operational staff.

It is informed by a range of technical investigations, which consider aspects including topography, existing natural site features, as well as flooding, bushfire, and heritage constraints.



### What are the key features of the Batemans Bay Community Health master plan?

The new facility will integrate a range of community health services under one roof in a culturally welcoming facility.

The community health service will be built on the site of the existing Batemans Bay Hospital and close to the recently opened Medicare Urgent Care Clinic, providing the community with easy access between the two services.

The location will make use of the existing infrastructure and transport routes already in place at the hospital, to maximise and maintain healthcare access for the community.

The community health service will be built on available hospital land towards the top of the hill on the Batemans Bay hospital site, minimising disruption to hospital services during construction.

The new service will support Southern Local Health District to provide patients and consumers a contemporary model of healthcare which integrates services such as Allied Health; Child, Youth and Family Care; Women's Health/Sexual Health; Primary healthcare services such as community nursing, wound management, and palliative care; Aboriginal Health; and Community Mental Health and Drug & Alcohol.

The master plan takes advantage of the site's orientation to bring natural light into the facility and includes landscaping.

The location of the service will allow the existing hospital to continue to provide healthcare services to the community throughout construction.



## Frequently Asked Questions

### Has the site for the new community health service been decided?

Yes. The site of the existing Batemans Bay Hospital building has been selected as the location for the new service due to its proximity to the recently opened Medicare Urgent Care Clinic, providing convenience to the community, and the ability to make use of the existing infrastructure and transport routes already in place at the hospital.

### What will happen to the current Batemans Bay hospital?

Batemans Bay Hospital will continue to provide healthcare services for the community while we build the new community health service.

### How will Batemans Bay Hospital services be maintained during construction?

Services will continue at Batemans Bay Hospital during construction of the community health service. The new service will be built on available land towards the top of the hill on the existing Batemans Bay Hospital site. We will work closely with staff, patients, and the community to minimise the impact of work on hospital operations.

### When will construction of Batemans Bay Community Health start?

Construction will begin once the important planning and design phases are completed. We are committed to providing updates on the project phases as they progress.

### How are health services changing across the wider Eurobodalla Shire?

The new \$20 million Batemans Bay Community Health and the new \$260 million Eurobodalla Regional Hospital are being planned and designed to work together to ensure the community has access to the right healthcare in the right setting.

The existing Batemans Bay and Moruya Hospitals will continue to provide healthcare services for the community while we build the Batemans Bay Community Health and Eurobodalla Regional Hospital.

Hospital services from Batemans Bay and Moruya Hospitals will transfer to the new Eurobodalla Regional Hospital once the new facilities are built. We are committed to sharing more information as the project progresses.

The Eurobodalla Regional Hospital will include an expanded emergency department and the first intensive care unit in the Eurobodalla region, providing the people of Eurobodalla with greater access to care, closer to home.

Eurobodalla Health Services work in partnership with Ambulance NSW to support the healthcare needs of the entire Eurobodalla Shire community from Narooma to Batemans Bay.

### What services will be included in the new facility?

The Batemans Bay Community Health facility is being designed to meet the healthcare needs of the community and provide improved local access to services including:

- Allied Health
- Child, Youth and Family Care
- Women's Health/Sexual Health
- Primary healthcare services such as community nursing, wound management, and palliative care
- Aboriginal Health
- Community Mental Health and Drug & Alcohol.

### How did NSW Health determine which services would be included in Batemans Bay Community Health?

The first stage in the development of a new health service in NSW is a clinical services plan.

The Clinical Services Plan, developed by Southern NSW Local Health District, ensures Batemans Bay has sustainable healthcare and is based on the community's current and future needs.

Southern NSW Local Health District use a variety of information to predict the demand for health services and plan future service provision to the community.

Information such as current health demographics, social determinants of health, current and future health service activity, population data in addition to comprehensive feedback from health service staff and community members are utilised to determine which services will be included in the future Batemans Bay Community Health.

The Batemans Bay Community Health service will work together with the new Eurobodalla Regional Hospital to meet the healthcare needs of the community.

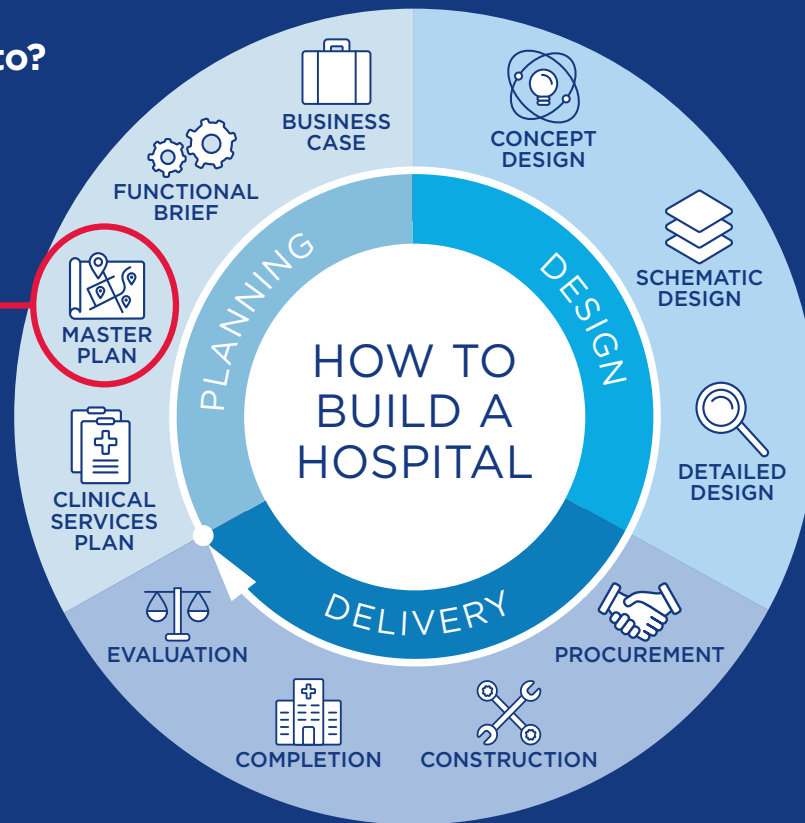
### How will Batemans Bay Community Health benefit the community?

The new service will:

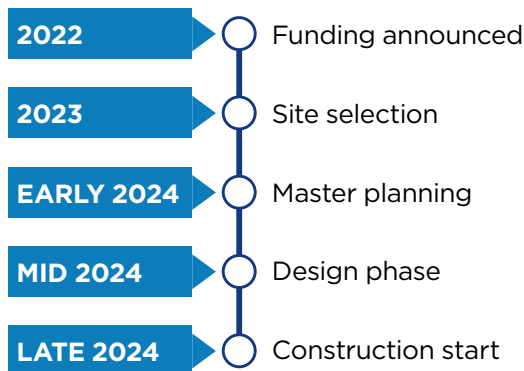
- provide a sustainable, dedicated, health service for the Batemans Bay and surrounding community;
- work with the new Eurobodalla Regional Hospital, to ensure the community has access to the right healthcare in the right setting; and
- use the latest technology and models of care to deliver patient-centred health services close to home.

## Where is the project up to?

**WE ARE HERE**



### What is the anticipated project timeline?



### Stay in touch as the project progresses

Feedback from our communities helps inform the design of health facilities to meet your local needs.

If you have a question or comment, or would like to join our mailing list, email us at:  
**Hi-BatemansBayhealth@health.nsw.gov.au**

### Have your say

Do you want to have a say on how we plan and design Batemans Bay Community Health?



Complete our online survey or come and see us in person. The survey is open until 25 February 2024.

Scan the QR code to access the survey (left).

### Meet the project team at the upcoming community drop-in sessions which will be held at:

- Tuesday 30 January, 5pm to 7pm  
Long Beach Foreshore
- Thursday 1 February, 4pm to 6pm  
Village Centre Batemans Bay
- Friday 2 February, 9am to 12pm  
corner Beach Rd and Edward Rd, Batehaven

Join the mailing list, provide feedback or contact the project team at:

**Email:** Hi-BatemansBayhealth@health.nsw.gov.au  
**Phone:** 1300 391 949  
**Web:** hinfra.health.nsw.gov.au